

Peterhead Theatre Tech Spec



- Proscenium Theatre with non-raked stage
- Raked seating with capacity for 291 plus 21 wheelchair spaces
- Truss above the seated area operated by a mechanical lift system
- On both sides, half way distance between proscenium and top of seating area there are 2 bars, one per side suitable for side lighting
- Total of 13 bars: 3 powered, with sockets and on winding rising system; 6 bars on rope pulley rigging system; 4 fixed bars
- 63 Amp 3 phase connector available
- Each side of stage has 8 microphones inputs, 1 intercom and 2 foldbacks

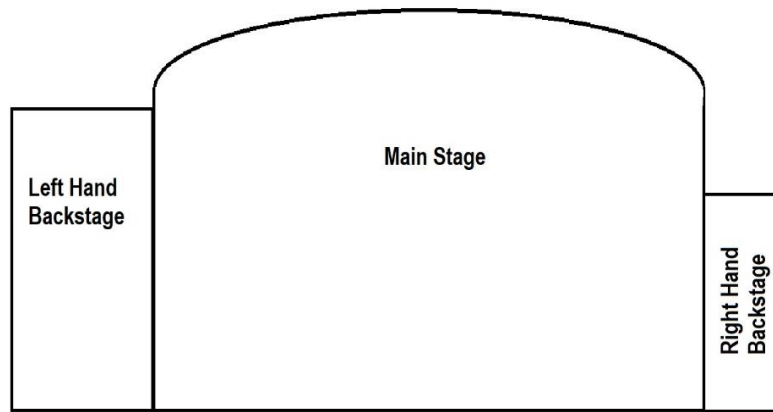
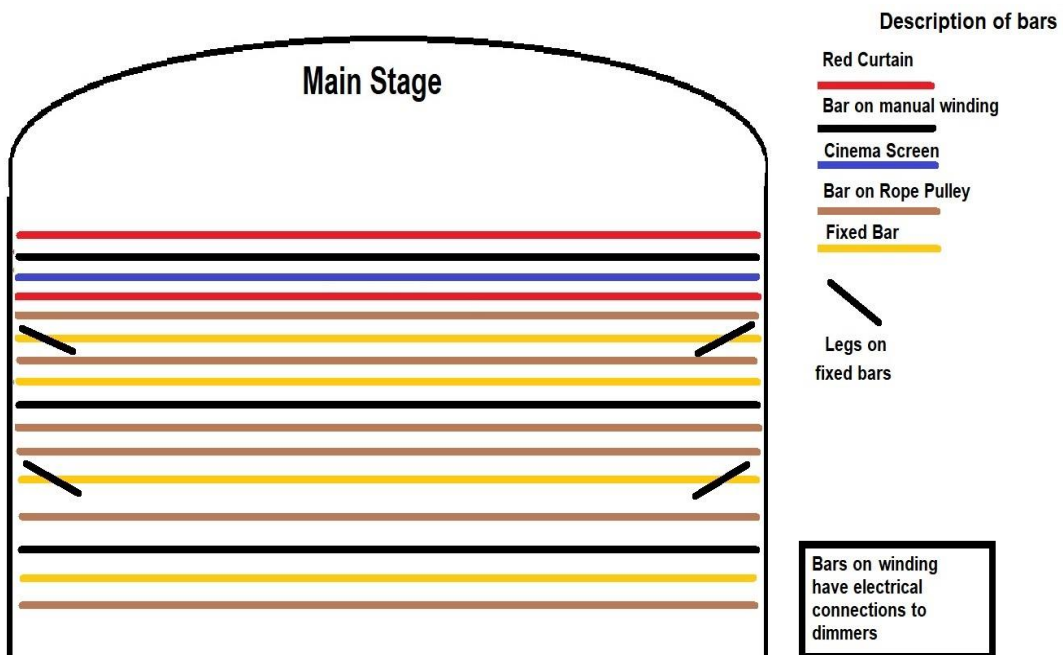


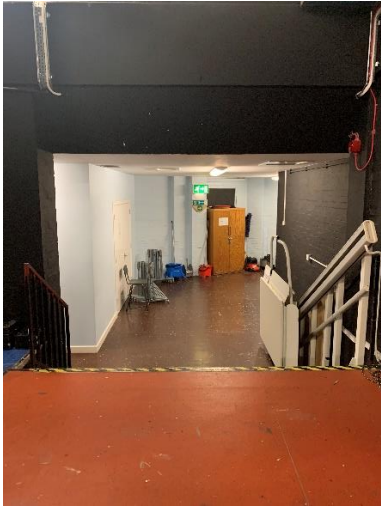
Image not to scale.

- stage floor length – 10000mm
- stage floor width – 5980mm
- height of bars and truss – 4000mm
- Left hand side backstage length – 4910mm
- Left hand side backstage width – 6775mm
- Right hand side backstage length – 3700mm
- Right hand side backstage width – 4300mm
- Orchestra pit (front of stage) length – 10000mm
- Orchestra pit (front of stage) width – 1500mm

Rigging bars, truss, proscenium curtains legs and skirts available: (see drawing for location and type of each line)



Backstage access and ramp



Mains Power 63A 3Ph and view of the bars



- 2 dressing rooms both equipped with showers and toilets facilities. For larger companies/events there is the potential to use the school canteen as changing rooms.

Sound booth equipment on site

Behringer X32	
DBX Speaker Management System,	1
Microphone Receivers Seenheiser with Antenna Splitter,	5
Nec Video Projector.	1
Crest Amplifiers VS650	2
CD Player Tascam CD200	1
Control System Unit	1
Audio Induction loop	

Contacts

Venue address

Peterhead Leisure & Community Centre, Balmoor Terrace, Peterhead, Aberdeenshire,
AB42 1EP

Tel 01779 403736

Email: pladmin@aberdeenshire.gov.uk