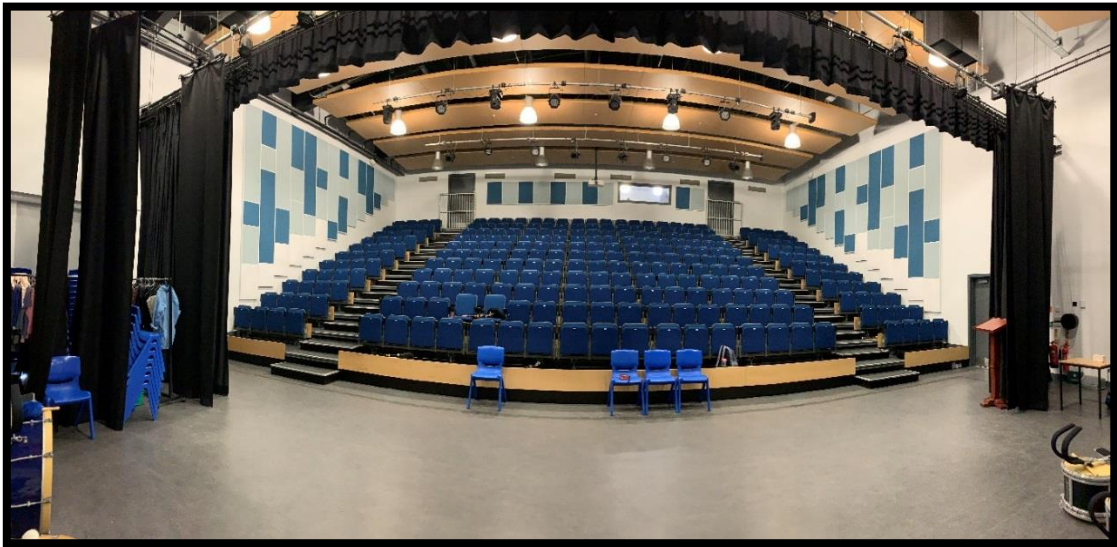




Alford Theatre

Tech Spec



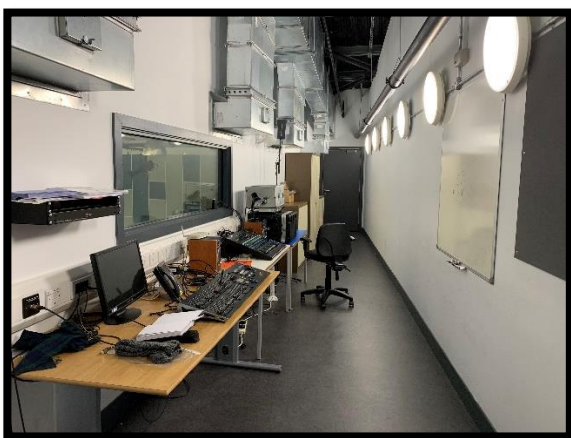
- Open floor stage
- Retractable seating
- 270 audience capacity
- Stage area width 9500mm
- Stage area depth 6000mm
- Main hall (seating retracted) 16000mm by 16000mm
- One changing room in backstage. Toilets in different wing of building

Equipment on site

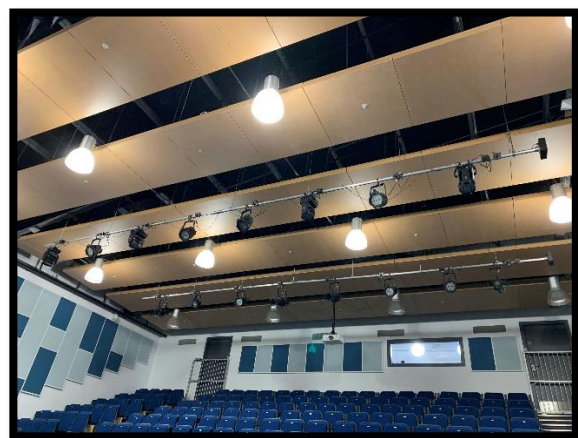
Linear Flood	4	Colorado Batten 72 Tour
Par Can 7 LED	8	Colorado 1 Tri-7 Tour
Colorado Q-Wash 419z LED	4	
Ellipsoidal Spotlight	4	Ovation ED-190WW
Par Can 14 LED	4	Colorado 1-Tri Tour
Par Can Style 14 LED	4	Colorado 2-Quad Zoom VW Tour
Tiered seating 250 seats	1	
Lighting Board	1	Strand
Induction Loop Amplifier	1	PDA Range 500/2
Lighting Board	1	Zero88 Jester 48
Monitor	1	Hanns.G
Sound Desk	1	Allen&Heath Qu-24

Light and sound equipment on fixed bars, extra equipment must be rigged on truss and winding towers, contact Arts & Heritage Technical Officer for details. More equipment available on request, refer to mobile kit list at end of document.

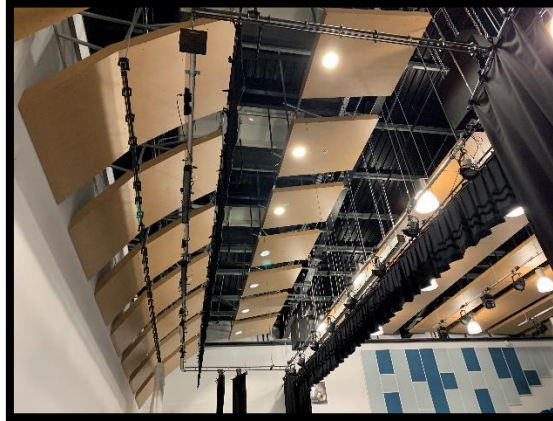
Control Room



Off stage bars



In Stage bars



Contacts

Venue address

Alford Community Campus, Greystone Rd, Alford, Aberdeenshire, AB33 8UR

Tel 01975 562922

Tech and programming:

performanceandevents@aberdeenshire.gov.uk

MOBILE KIT AVAILABLE TO HIRE

Prices on application

Contact performanceandevents@aberdeenshire.gov.uk

Sound

- Allen Heat Mixing QU-24 Digital Mixing desk
This includes Road Case, AudioRack AB168 (16 inputs and 8 outputs) and 50mt of Cable CAT5
- Active Subwoofer Alto Truesonic 15" (2 available)
- Active Top speaker Alto Truesonic TS312 12" (4 available)
- Active top/monitor speaker Alto Truesonic TS308 8" (10 available)
- AKG Drum Set Session 1 Microphones Kit Set 7 pieces - (1 unit available)
- Shure SM58 microphone with pouch and holder – (4 units available)
- Shure SM57 microphone with pouch and holder – (4 units available)
- Rode NT5 matched pair with SM4-R mounts – (1 matched pair available)
- Rode NT microphone with power supply and shockmount – (1 unit available)
- Behringer DI100 DI box – (4 units available)
- Microphone stands – (16 available)
- 6mt XLR-XLR lead – (25 units available)
- 10mt XLR-XLR lead – (45 units available)
- Jack Jack Speaker cable 10mt – (10 units available)
- Fender Mustang MK3 guitar amplifier – (2 units available)
- Orange Crush Bass 50 black Bass Amplifier – (1 unit available)
- Yamaha GigMaster 5 piece Drum kit – (1 kit available)
- Yamaha Pacifica 6 string electric guitar – (1 unit available)
- Ibanez SR300EB-CA 4 string Electric Bass – (1 unit available)

Lighting

- Showtec Creator 1024 Controller with case – (1 unit)
- Stagg Wash 200 Stage Light Warm White – (9 units available)
- Stagg 200-Watt Profile Stage Light – (3 units available)
- Stagg ECOPAR 186 Spotlight RGBW – (6 units available)
- Stagg Headbanger 10 7x10 Watt – (4 units available)
- 5mt DMX lead – (20 units available)
- 10mt DMX lead – (50 units available)

Rigging and Stage

- F34 2mt Truss – (6 units available)
- Adam Hall 4mt Wind Up Lighting stand with truss adaptor – (4 units available)
- 32Amp Power Distribution Box with 63Amp to 32Amp 3ph adaptor (32Amp 3ph input to 16Amp 1ph 6 outputs) – (1 unit available)
- 16Amp Power Distribution box (16Amp 1ph input to 6 13Amp 1ph UK plug) – (4 units available)
- 10mt 16Amp 1ph Extension Cable – (4 units available)
- 10mt 32Amp 3ph Extension Cable – (1 unit available)